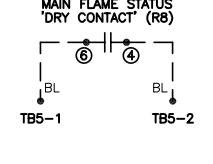
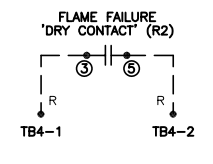
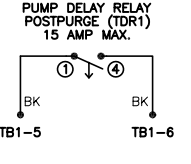
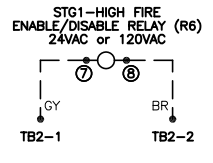
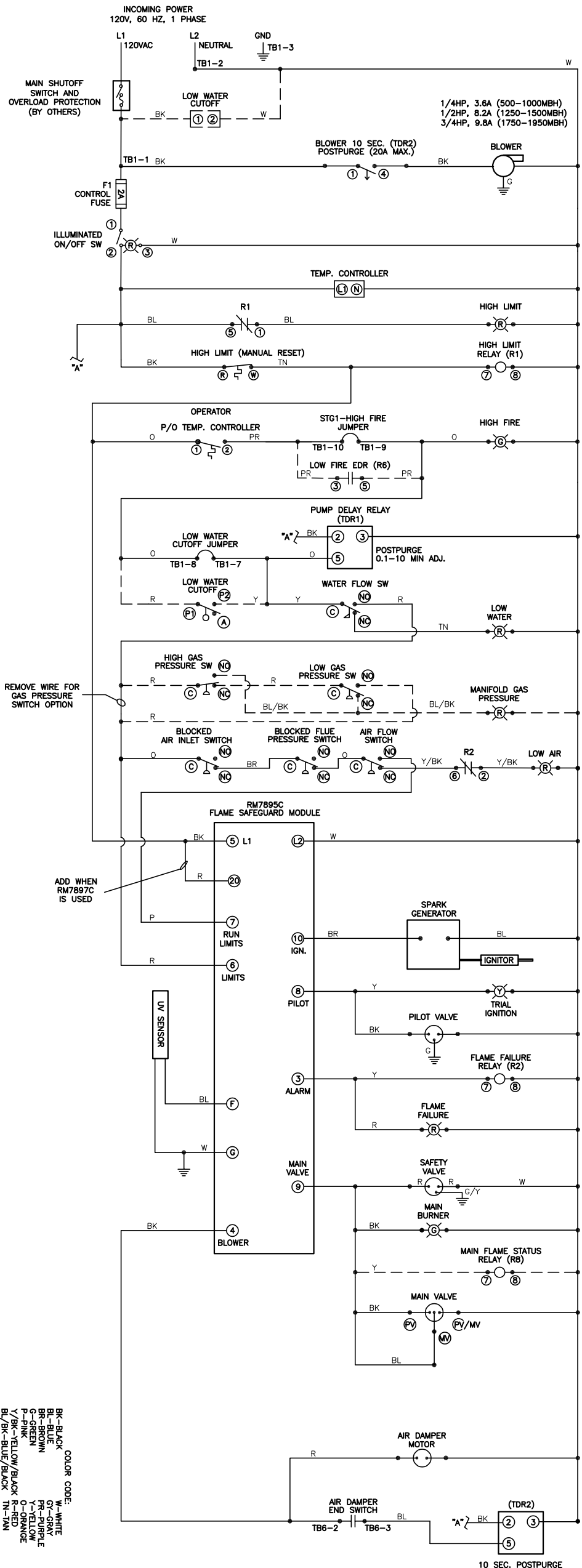


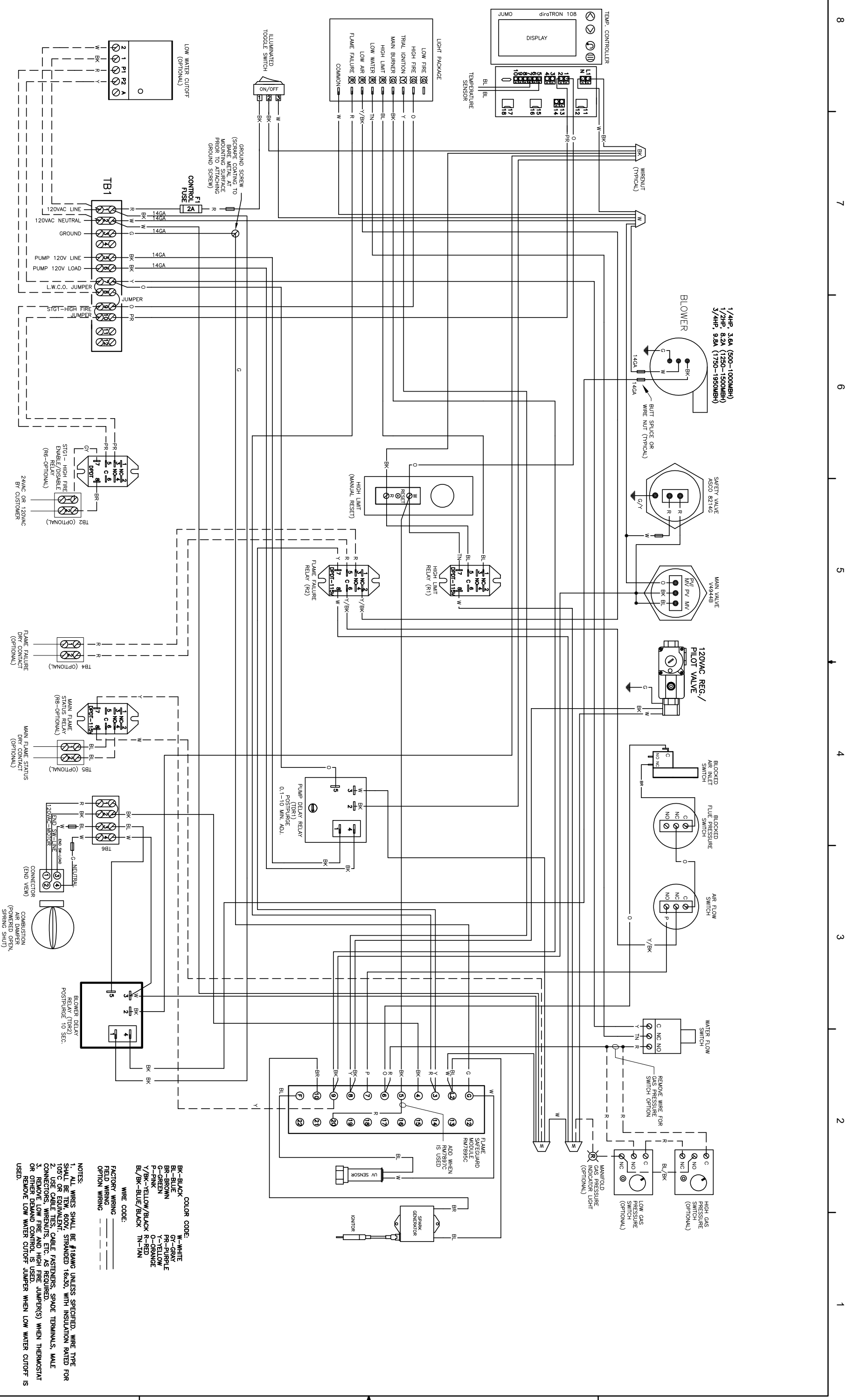
REVISIONS				
REV.	EN. NO.	DATE	DRAWN BY	APPROVED
C	N/A	07/11/06	N/A	ET
D	N/A	12/10/10	N/A	ET
E	N/A	11/30/11	N/A	ET
F	N/A	11/11/13	N/A	ET
G				



WIRE CODE:  
 FACTORY WIRING ———  
 OPTION WIRING - - - - -

NOTES:  
 1. REMOVE LOW FIRE AND HIGH FIRE JUMPER(S) WHEN THERMOSTAT OR OTHER DEMAND CONTROL IS USED.  
 2. REMOVE LOW WATER CUTOFF JUMPER WHEN LOW WATER CUTOFF IS USED.

DIVISION		PRODUCT		DRAWN BY		DRAWING DESCRIPTION	
RBI		FB & FW 500 TO 1950		AC		LADDER DIAGRAM	
THE PRINT AND ALL INFORMATION THEREON IS PROPERTY OF THE DIVISION OF WESTEK, INC. NEITHER THE PRINT NOR THE INFORMATION THEREON MAY BE REPRODUCED OR USED IN ANY MANNER WHATSOEVER OR DIVULGED TO ANY OTHER PERSON UNLESS SPECIFICALLY AUTHORIZED BY WESTEK, INC.				CHECKED BY		DATE	
				ET		04/28/05	
				APPROVED BY		DATE	
				N/A		N/A	
SHEET		SHEET SIZE		SCALE		REVISION	
1 OF 2		B		N/A		G	



**WIRE CODE:**  
 FACTORY WIRING: ———  
 FIELD WIRING: - - - - -

**WIRE COLOR CODE:**  
 BK-BLACK  
 BL-BLUE  
 BR-BROWN  
 GR-GREEN  
 GN-GRAY  
 G-GREEN  
 P-PINK  
 Y/YLW-YELLOW  
 Y/BK-YELLOW/BLACK  
 R-RED  
 BL/BK-BLUE/BLACK  
 TN-TAN

**NOTES:**  
 1. ALL WIRES SHALL BE #18AWG UNLESS SPECIFIED. WIRE TYPE SHALL BE THW, 600V, STRANDED 16-20, WITH INSULATION RATED FOR 105°C OR EQUIVALENT.  
 2. USE CABLE TIES, CABLE FASTENERS, SPADE TERMINALS, MALE CONNECTORS, WIRENUTS, ETC. AS REQUIRED.  
 3. REMOVE LOW FIRE AND HIGH FIRE JUMPER(S) WHEN THERMOSTAT OR OTHER DEMAND CONTROL IS USED.  
 4. REMOVE LOW WATER CUTOFF JUMPER WHEN LOW WATER CUTOFF IS USED.

DIVISION	RBI	DRAWING DESCRIPTION	CONNECTION DIAGRAM
PRODUCT	FB & FW 500 TO 1950	DRAWING NUMBER	42-0903
SHEET	2 OF 2	SHEET SIZE	SCALE
	B		N/A
			REVISION
			G